

ESPECIALLY DESIGNED FOR QUICK,
ACCURATE AND HANDSFREE INSPECTION
OF BAGGAGE AND SMALL CARGO



X-RAY BAGGAGE INSPECTION SYSTEMS

BV 100100TB

This inspection system offers a sophisticated technology, large tunnel size and minimum inspection time with no need for unpacking and opening the inspected objects.

BV 100100TB system is a very convenient and effective solution for sites where large baggage and small cargo control is required. It has an easy loading design with a lower deck pallet of just 300 mm [11.81"] height.

BV 100100TB meets the requirements of customs facilities, airports, logistics companies or wherever security screening of heavy packages is required. It guarantees high throughput and effective screening.



AIRPORTS



SECURITY CHECKPOINTS



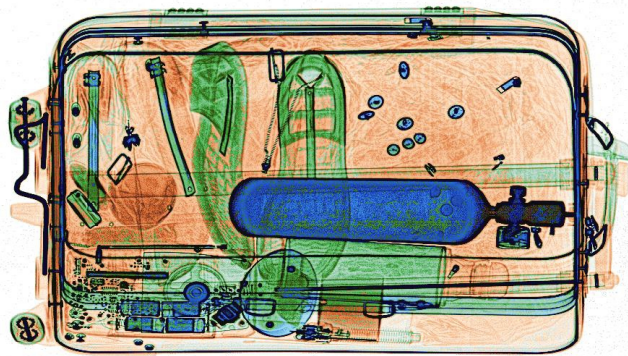
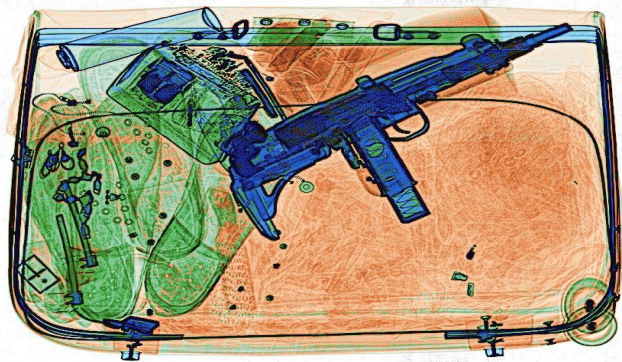
BORDER CROSSINGS



CUSTOMS FACILITIES



SEAPORTS



ADANI
www.adanisystems.com
info@adanisystems.com

 **ADANI**
from ideas to solutions

X-RAY BAGGAGE INSPECTION SYSTEMS

BV 100100TB

KEY FEATURES

- ▶ COST-EFFECTIVE SOLUTION
- ▶ PROVEN RELIABILITY
- ▶ SIMPLE INTERFACE
- ▶ REAL-TIME SELF-DIAGNOSTICS
- ▶ AUTOMATIC IDENTIFICATION OF SUSPICIOUS OBJECTS
- ▶ MULTILANGUAGE INTERFACE
- ▶ QUICK START-UP AND SHUTDOWN
- ▶ THE FAULT-TOLERANT CONFIGURATION OF THE SYSTEM

OPTIONS

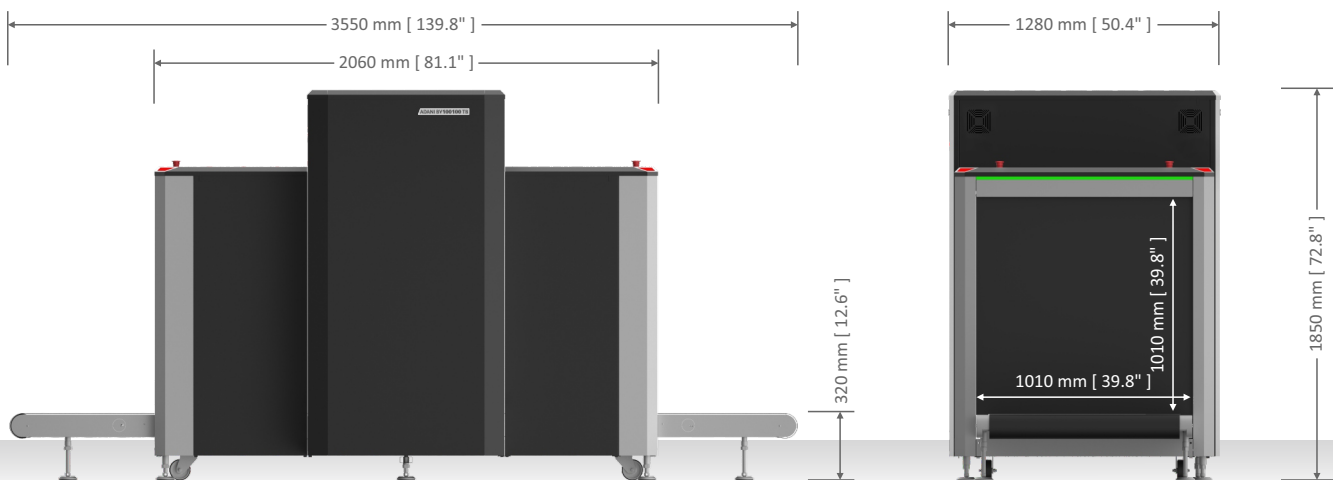
- ▶ ENTRY / EXIT ROLLERS OF VARIOUS LENGTH
- ▶ OPERATOR'S DESK
- ▶ SET OF TEST OBJECTS
- ▶ TWO MONITORS FUNCTIONALITY
- ▶ TOUCHSCREEN OPERATION
- ▶ RAMP
- ▶ UNINTERRUPTIBLE POWER SUPPLY

Specifications

Tunnel dimensions (WxH)	1010 x 1010 mm [39.8"x 39.8"]	
Conveyor speed	0,22 ± 0,03 m/s [0.49 ± 0.06 mph]	
Load on the conveyer	Max 200 kg [441 lbs]	
Anode voltage	Standard 140 kV / High 160 kV	
Steel penetration in high mode	GUARANTEED 34 mm [1.34"]	TYPICAL 36 mm [1.42"]
Wire detectability	0,1 mm (38 AWG)	
Dual-energy detector	Yes	
Number of colors within the X-ray image	7 and 3	
Dimensions (LxWxH)	3550 x 1280 x 1850 mm [139.8" x 50.4" x 72.8"]	
Weight	950 kg [2094 lbs]	
Power Supply	230 VAC ± 10% / 120 VAC ± 5%, 50/60 Hz	
Power Consumption	Max 0,9 kVA	
Operating temperature	from 0 to 40 °C [32 to 104 °F]	
Humidity (at + 35 °C)	up to 98%, non condensing	

List of software features available to an operator

- ▶ Automatically calibrating and normalizing the X-ray detector
- ▶ Highlighting optically dense objects
- ▶ Adjusting contrast of strongly absorbing objects
- ▶ Inverting images
- ▶ Gamma-correction of images
- ▶ Optimizing the overall contrast
- ▶ Coloring substances with atomic numbers from a selected range
- ▶ Pseudocoloring of images
- ▶ Displaying organic objects with atomic numbers equal to 7, 8, and 9
- ▶ Displaying substances according to a selected range of signal strength
- ▶ Zooming images up to 96x
- ▶ Automatically saving X-ray images in archive
- ▶ Browsing the image (JPEG format) archive
- ▶ Copying images on external storage media
- ▶ Threat Image Projection (TIP)
- ▶ Counting inspected baggage
- ▶ Preparing service reports



0383-SA-29082018

Compliant with standards for cabinet X-ray systems (USFDA, Center for Devices and Radiation Health, 21-CFR 1020.40) Typical radiation leakage is less than 0.1 mR/hr (1 µSv/hr) (Leakage less than 0.5 mR/hr permitted by the Federal Standard) Guaranteed even for high speed films up to ISO 1600 (33 DIN)



Authorized Representative in EU/EC



ADANI Systems, Inc.
13631 Poplar Circle
Conroe, TX 77304
(936) 588-2064

With continual development of our products ADANI reserves the right to make changes to the design and specifications at any moment and without notice.