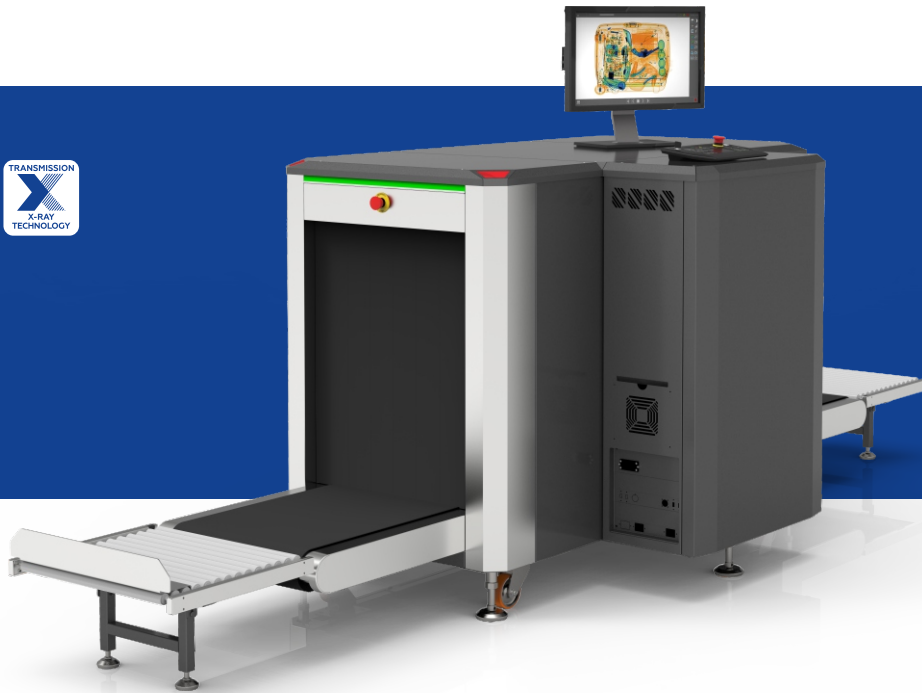


ESPECIALLY DESIGNED FOR CUSTOMERS
REQUIRING THE INSPECTION OF
CHECK-IN ROLLING LUGGAGE, HANDBAGS, BOXES
AND PARCELS WITHOUT OPENING THEM



X-RAY BAGGAGE INSPECTION SYSTEMS

BV 6080

ADANI BV 6080 is provided with dual energy features, threat detection algorithms, adjustable density alert function, enhanced archive and TIP features. An ergonomic workstation with operator console provides easy to use operation.

ADANI BV 6080 allows identification of weapons, explosives (including plastic explosives), drugs, primers and dangerous objects, which are safety hazard.



**BORDER CROSSINGS
TRANSPORTATION FACILITIES**



AIRPORTS



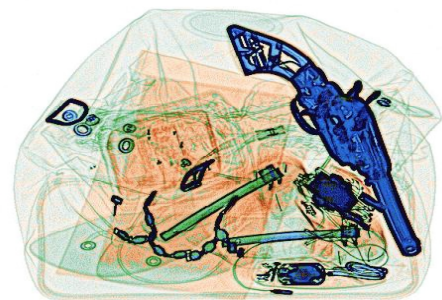
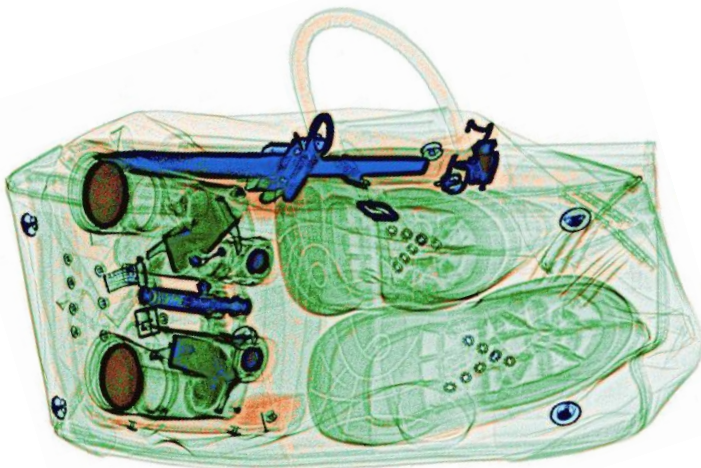
**SECURITY CHECKPOINTS
CORRECTIONAL FACILITIES**



**GOVERNMENTAL BUILDINGS
COURT HOUSES**



**BANKS
HOTEL COMPLEXES**



ADANI
www.adanisystems.com
info@adanisystems.com

 **ADANI**
from ideas to solutions

KEY FEATURES

- ▶ PROVEN RELIABILITY
- ▶ SIMPLE INTERFACE
- ▶ EASY TO USE AND HIGHLY EFFECTIVE
- ▶ REAL-TIME SELF-DIAGNOSTICS
- ▶ AUTOMATIC IDENTIFICATION OF SUSPICIOUS OBJECTS
- ▶ MULTILANGUAGE INTERFACE
- ▶ QUICK START-UP AND SHUTDOWN
- ▶ THE FAULT-TOLERANT CONFIGURATION OF THE SYSTEM

OPTIONS

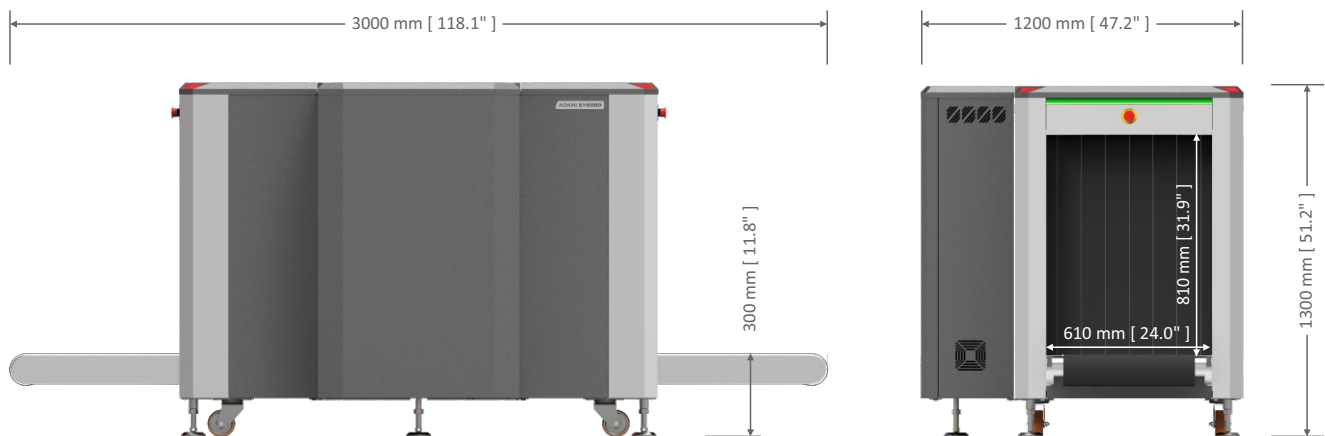
- ▶ ENTRY / EXIT ROLLERS OF VARIOUS LENGTH
- ▶ OPERATOR'S DESK
- ▶ SET OF TEST OBJECTS
- ▶ TWO MONITORS FUNCTIONALITY
- ▶ TOUCHSCREEN OPERATION
- ▶ RAMP
- ▶ UNINTERRUPTIBLE POWER SUPPLY

Specifications

Tunnel dimensions (WxH)	610±3 x 810±5 mm [24.0" x 31.9"]		
Conveyor speed	0,22 ± 0,03 m/s [43.3 ft./mi]		
Load on the conveyer	Max 180 kg [397 lbs]		
Anode voltage /current	Low	Standard	High
	-	140 kV	160 kV
	-	0,6 mA	0,4 mA
Steel penetration in high mode	GUARANTEED	TYPICAL	
	34 mm [1.34"]	36 mm [1.42"]	
Wire detectability	0,08 mm (40 AWG)		
Dual-energy detector	Yes		
Dimensions (LxWxH)	3000 x 1200 x 1300 mm [118.1" x 47.2" x 51.2"]		
Weight	700 kg [1543 lbs]		
Power Supply	230 VAC ± 10% / 120 VAC ± 5%		
Power Consumption	less than 0.9 kVA		
Operating temperature	from 0 to 40 °C [32 to 104 °F]		
Humidity	up to 98%, non condensing		

List of software features available to an operator

- ▶ Automatically calibrating and normalizing the X-ray detector
- ▶ Highlighting optically dense objects
- ▶ Adjusting contrast of strongly absorbing objects
- ▶ Inverting images
- ▶ Gamma-correction of images
- ▶ Optimizing the overall contrast
- ▶ Coloring substances with atomic numbers from a selected range
- ▶ Pseudocoloring of images
- ▶ Displaying organic objects with atomic numbers equal to 7, 8, and 9
- ▶ Displaying substances according to a selected range of signal strength
- ▶ Zooming images up to 96x
- ▶ Automatically saving X-ray images in archive
- ▶ Browsing the image (JPEG format) archive
- ▶ Copying images on external storage media
- ▶ Threat Image Projection (TIP)
- ▶ Counting inspected baggage
- ▶ Preparing service reports



Compliant with standards for cabinet X-ray systems (USFDA, Center for Devices and Radiation Health, 21-CFR 1020.40)
 Typical radiation leakage is less than 0.1 mR/hr (1 µSv/hr)
 (Leakage less than 0.5 mR/hr permitted by the Federal Standard)
 Guaranteed even for high speed films up to ISO 1600 (33 DIN)



Authorized Representative in EU/EC



ADANI Systems, Inc.
 13631 Poplar Circle
 Conroe, TX 77304
 (936) 588-2064