

# X-RAY BAGGAGE INSPECTION SYSTEMS

## BV 6045DV

OPTIMAL DUAL VIEW SOLUTION FOR QUICK AND ACCURATE INSPECTION OF PARCELS, SMALL AND MID-SIZE BAGGAGE



CE  
1639



BORDER CROSSINGS  
TRANSPORTATION  
FACILITIES



SECURITY CHECKPOINTS  
CORRECTIONAL  
FACILITIES



GOVERNMENTAL  
BUILDINGS  
COURT HOUSES



BANKS  
HOTEL COMPLEXES



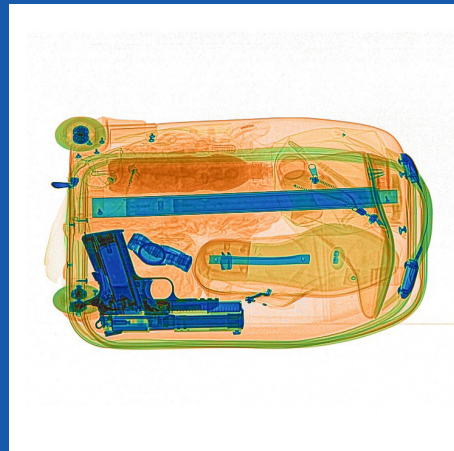
CRUISE SHIPS  
CRITICAL  
INFRASTRUCTURE

BV 6045DV is a reliable, optimal and cost-effective security solution which provides enhanced threat and contraband detection capabilities. The system is intended to make the security screening process effective, fast and automated.

Due to its optimal tunnel size, the system can be used at any facility and within any application scenario. No additional security infrastructure is required and can be easily relocated as appropriate.

High image quality in combination with advanced image processing tools and threat detection assistance software allows the operator to quickly and effectively evaluate baggage content without any negative impact on throughput capacity.

ARTIFICIAL INTELLIGENCE SOFTWARE  
FOR ADANI BAGGAGE INSPECTION

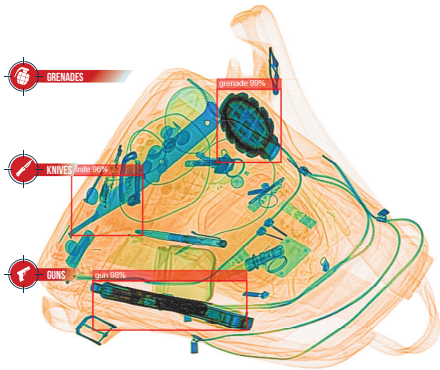


## KEY FEATURES

- DUAL-VIEW TECHNOLOGY
- SIMPLE INTERFACE
- AUTOMATIC IDENTIFICATION OF SUSPICIOUS OBJECTS
- MULTILANGUAGE INTERFACE
- QUICK START-UP AND SHUTDOWN
- THE FAULT-TOLERANT CONFIGURATION OF THE SYSTEM

## OPTIONS

- ENTRY / EXIT ROLLERS OF VARIOUS LENGTH
- OPERATOR'S DESK
- STAND FOR MONITORS AND SPECIALIZED KEYBOARD
- SET OF TEST OBJECTS
- TOUCHSCREEN OPERATION
- TWO MONITORS FUNCTIONALITY
- UNINTERRUPTIBLE POWER SUPPLY



## ARTIFICIAL INTELLIGENCE SOFTWARE FOR ADANI BAGGAGE INSPECTION

Compliant with standards for cabinet X-ray systems (USFDA, Center for Devices and Radiation Health, 21-CFR 1020.40)  
 Typical radiation leakage is less than 0.1 mR/hr (1 µSv/hr)  
 (Leakage less than 0.5 mR/hr permitted by the Federal Standard)  
 Guaranteed even for high speed films up to ISO 1600 (33 DIN)

With continual development of our products ADANI reserves the right to make changes to the design and specifications at any moment and without notice.

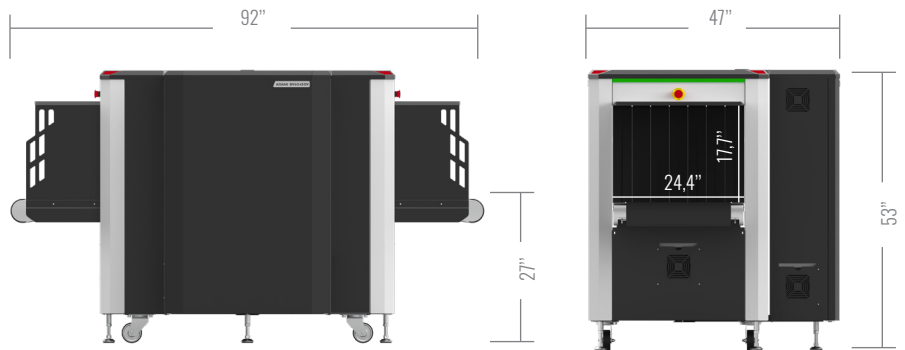


## LIST OF SOFTWARE FEATURES AVAILABLE TO AN OPERATOR

- Automatically calibrates and normalizes the X-ray detector
- Highlights optically dense objects
- Adjust contrast of strongly absorbing objects
- Gamma-correction of images
- Optimizes the overall contrast
- Colors substances with atomic numbers from a selected range
- Displays organic objects with atomic numbers equal to 7, 8, and 9
- Displays substances according to a selected range of signal strength
- Zoom images up to 96x
- Automatically saves X-ray images in archive
- Browse the image (JPEG format) archive
- Copies images on external storage media
- Counts inspected baggage
- Real-time self-diagnostics

## SPECIFICATIONS

|   |   |                  |
|---|---|------------------|
| Tunnel dimensions (WxH)                 | 25" x 18"                               |                  |
| Conveyor speed                          | 43.3 ft./min                            |                  |
| Load on the conveyer                    | Max 441 lbs                             |                  |
| Anode voltage                           | 160 kV                                  |                  |
| Steel penetration                       | GUARANTEED<br>1.42"                     | TYPICAL<br>1.46" |
| Wire detectability                      | 0.08 mm (40 AWG)                        |                  |
| Dual-energy detector                    | Yes                                     |                  |
| Number of colors within the X-ray image | 7 and 3 and infinity palettes           |                  |
| Dimensions (LxWxH)                      | 92"x 47."x 53"                          |                  |
| Weight                                  | 1,764 lbs                               |                  |
| Power Supply                            | 230 VAC ± 10% / 120 VAC ± 5%, 50/60 Hz  |                  |
| Power Consumption                       | less than 1.2 kVA                       |                  |
| Operating temperature                   | from <sup>32</sup> to <sup>104</sup> °F |                  |
| Humidity                                | up to 95%, non condensing               |                  |



**ADANI**  
[www.adanisystems.us](http://www.adanisystems.us)  
[info@adanisystems.com](mailto:info@adanisystems.com)



0564-SA31082020