

AIRSHIP EMS

COMPLETE SECURITY ASSET MANAGEMENT

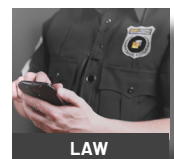


Airship Enterprise Management System (EMS) is a powerful web application that enables your System Administrator to centrally manage servers, cameras, components and users from one screen. EMS allows you to dial in permissions for individual users or their groups, integrate active directory users, archive video, create individualized cases, and more with ease using EMS's wizard-style interface.

EMS is flexible as it is powerful, and is utilized in law enforcement as well as commercial applications. Specialized workflows preserve evidence and provide specific auditing capabilities. Virtualized server instances and individualized cases create adaptive compartmentalization for sensitive access. Whether yours is a local, nationwide, or worldwide deployment, Airship EMS can scale to meet your needs.



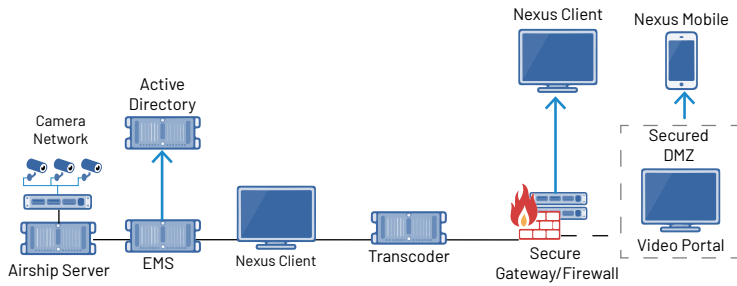
- ✓ Scales from Ten To Tens-of-Thousands of Cameras and Sensors
- ✓ Management Console for Video Archiving and Failover Events
- ✓ Wizard Based Interface that is Highly Intuitive and Easy to Use
- ✓ Manage Licenses, Users, Groups and Permissions Across System
- ✓ Engine that Manages Entire Airship Software Ecosystem
- ✓ System Administrator Dashboard for Adding and Managing Sensors
- ✓ Provides Audit Log Reports for All Primary Activities on System
- ✓ System-wide dashboard reporting of current cameras being recorded, storage utilized, use statistics, license usage, and more
- ✓ FIPS 140-2, NIST 800-53 and DHS 4300A Sensitive Systems Handbook Compliant
- ✓ Failover capabilities and control for: EMS servers, recording servers, cases (if fitted with Airship Case Management)
- ✓ Server management tools including: online backup of recorder settings, central device name control, server templates control, device cloning, software updates (Nexus Servers/Clients, Meta), data engines, virtual matrix with digital signatures
- ✓ Long-term storage options available through Airship Archiver Server



Airship treats cyber security, user-management and access seriously. Through the provision of tools like Multi-factor authentication, Single Source Sign-on using PIV cards and enhanced adherence to security standards and compliance such as DHS Sensitive Systems 4300a Handbook, NIST FIPS 140-2, Criminal Justice Information System (CJIS), and AES 128 and 256.



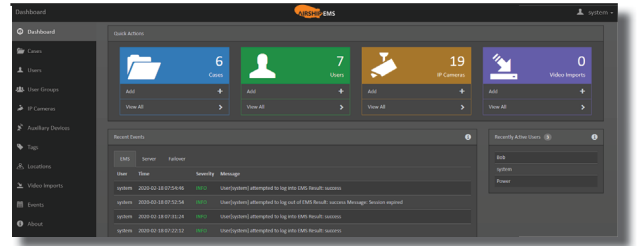
SYSTEM DIAGRAM



EMS securely connects to any number of Airship Servers, locally or remotely. Users of **Nexus Client** are verified with EMS prior to login.

EASY-TO-USE INTERFACE

Airship optimizes workflow with an intuitive interface that provides event logs, system health, and status indicators for wide control at a quick glance.



TAILORED SOLUTIONS

Airship EMS has natively integrated with third-party engines for facial recognition, license plate recognition, mesh radio networks, drone control, access control features and more. EMS integrates with an array of cameras and other leading-edge audio/video image transmission devices to support our clients where they are with current and future needs in mind. **Airship** works in lockstep with our clients to ensure integration is seamless.

AIRSHIP EDS

The **Evidence Discovery System (EDS)** runs parallel to the EMS for the purpose of making archived case video available for legal personnel in a scalable, isolated, and secured environment. The EDS ensures that video evidence remains secure for use in court cases and separates the management of active video collection from the archival system. Using the **EDS Video Portal** evidence can be shared via the web to designated agent/court users for external review.

VIRTUAL SERVER HOSTS (VSH)

EMS Administrators may use **Airship's Virtualization Agent** to setup a virtual instance of **Airship Server** to host case footage and metadata associated with specific cameras and/or permission levels. Within EMS, this is referred to as a VSH. Compartmentalizing footage is ideal for large organizations with specific and/or limited roles. From EMS, users can start, stop, and reset the individual service without restarting the entire machine the service is running on.

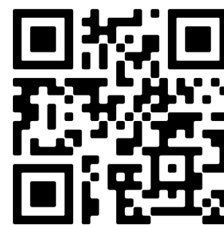
Toll Free: (877) 462-4250

12226 134th Ct NE

Redmond, WA 98052

airshipvms.com

Email: info@airshipvms.com



AIRSHIP