

# 4x4 MiMo 4G/5G Dome Antenna Kit

## LG-IN2447



### Low Profile 4x4 4G/5G MiMo

### 6x6 MiMo Dual Band WiFi

### GPS/GNSS Active Antenna 26dB LNA

The LG-IN2447 range has been designed to provide 4x4 4G/5G MiMo performance from 617-960/1710-6000MHz combined with GPS/GNSS and 6x6 MiMo WiFi 2.4/5.0GHz in a compact low profile housing.

The antenna is designed to be panel mounted and can be fitted on a conductive or non-conductive panel. Supplied with integrated flame retardant RG174 cables (Compliant to UNECE 118.01 and EN45545-2) and a halogen free flame retardant radome the antenna is suitable for many environments and applications. The antenna radome is available in black or white and meets IK10 for vandal resistance and IP69K for ingress protection.

The integrated GPS/GNSS module supports GPS, Glonass, Galileo, QZSS and Compass with 26dB LNA gain. This GPS module features advanced filtering for LTE B13/14 designed to minimise potential in band interference.

LG-IN2447 is supplied as a complete plug and play kit with integrated 5m (16') ultra-low loss TPE extension cables and SMA (m) connectors for 4G/5G and GPS and Rev Pol SMA for WiFi.



**Certified IK10**  
Impact Resistant



**Certified IP69K**  
Ingress Protected



**Flame Retardant**  
Halogen Free  
Radome -UL94-V0

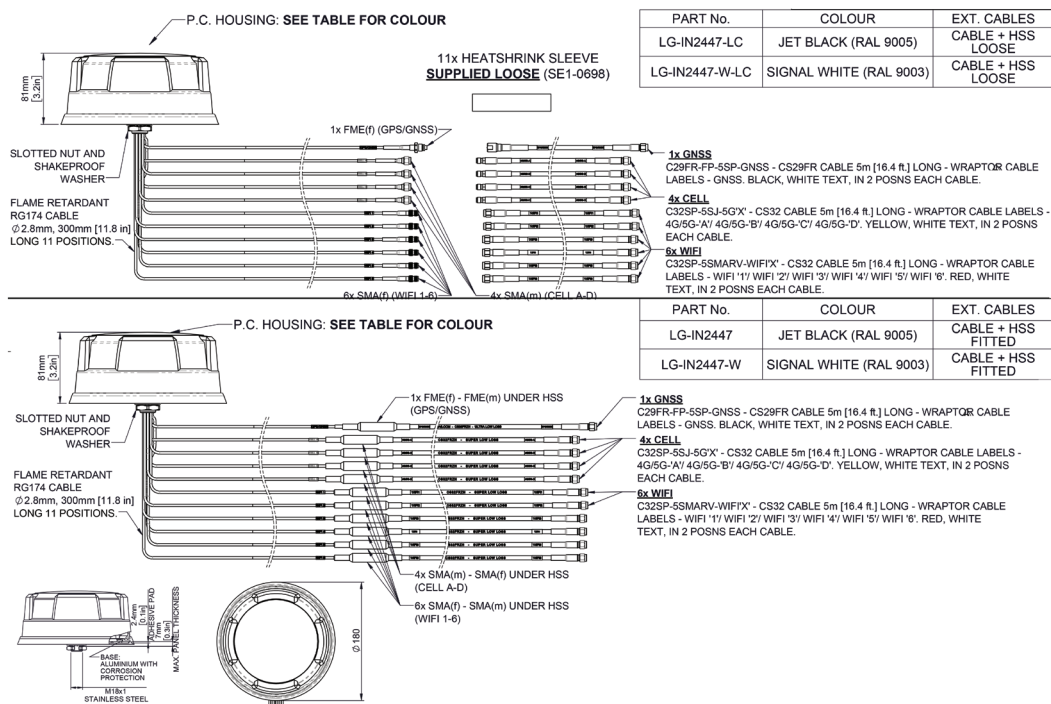


**UV, Ozone, High &**  
**Low Temperature**  
Protected



**Environmentally**  
Compliant - Meets  
RoHS, REACH - PVC  
Free

## Technical Drawing



# 4x4 MiMo 4G/5G Dome Antenna Kit LG-IN2447

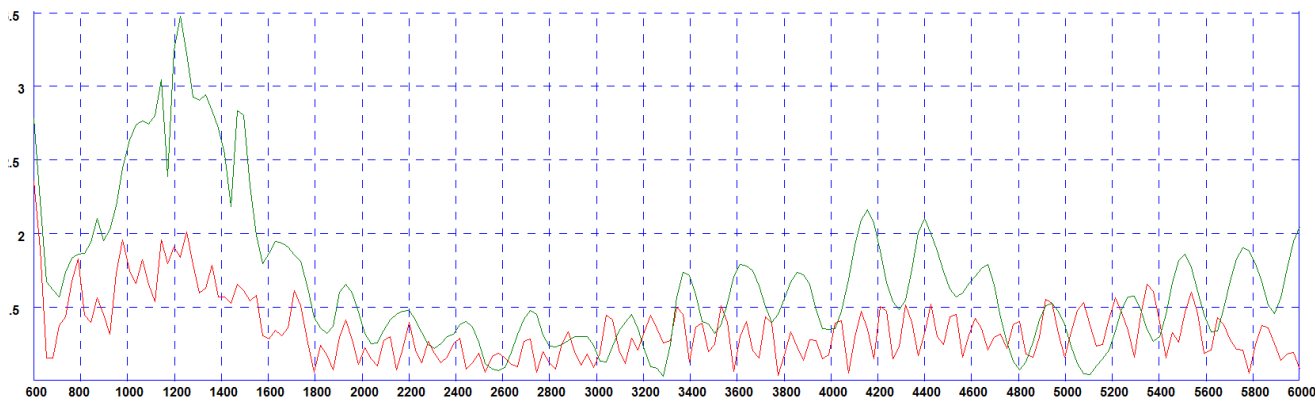
Part No.	LG-IN2447-W	LG-IN2447-W-LC	LG-IN2447	LG-IN2447-LC	
<b>Electrical Data</b>					
Frequency Range (MHz)	4G/5G Elements	4x 617-960 / 1710-6000			
	WiFi Elements	6x 2.4/4.9-6GHz			
Peak Gain: Isotropic : (dBi)	4G/5G Elements	617-960MHz	4		
		1710-3800MHz	8		
	WiFi Elements	4900-6000MHz	9		
		2.4 GHz	9		
Typical Efficiency **	4G/5G Elements	4.9-6.0GHz	9		
		617-960MHz	>50%		
	1710-3800MHz	>75%			
Isolation ***	WiFi Elements	4900-6000MHz	>85%		
	4G/5G Elements	2.4 GHz	>70%		
Correlation Co-efficient	WiFi Elements	4.9-6.0GHz	>10dB		
	4G/5G Elements	617-960MHz	>12dB		
Nominal Impedance	WiFi Elements	1710-3800MHz	< 0.2		
	4G/5G Elements	4900-6000MHz	<0.1		
<b>GPS/GNSS Data</b>					
Frequency Range (MHz)	1562-1612				
VSWR	<2.0:1 ± 4MHz				
Gain: LNA	26dB				
Out of band rejection	>40dB (@ > +/- 100MHz f)				
Typical Noise Figure	-2.7dB				
Notch Filter rejection @787MHz	24dB				
Operating Voltage	3 - 5V DC				
Typical Current (mA)	15				
<b>Mechanical Data</b>					
Dimensions (mm)	Height	80 (3.1")			
	Diameter	180 (7.1")			
Operating Temp	-40° / +80°C (-40° / +176° F )				
Colour	White		Black		
Ingress & Impact Protection	IK10 & IP69K				
<b>Mounting Data</b>					
Mounting type	Panel mount				
Max panel thickness (mm)	7 (0.27")				
Mounting hole (mm)	19 (3/4")				
<b>Extension Cable Data</b>					
All Cables	Type	FR CS29 (UN118.03 / EN45545-2 HL2Compliant)		CS32 (UN118.03 / EN45545-2 Compliant)	
		Fitted	Loose	Fitted	Loose
	Diameter (mm)	5 (0.2")			
	Length (m)	5 (16')			
<b>Terminations</b>					
4G/5G	4x SMA (m)				
WiFi	6x Reverse Polarity SMA				
GPS/GNSS	1x SMA (m)				

# 4x4 MiMo 4G/5G Dome Antenna Kit

## LG-IN2447

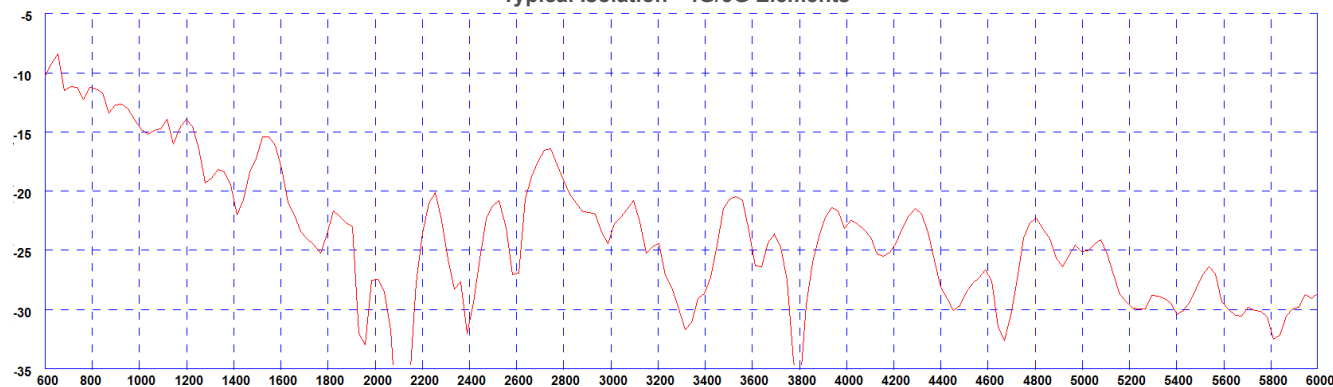
### Electrical Data

Typical VSWR - 4G/5G Elements\*



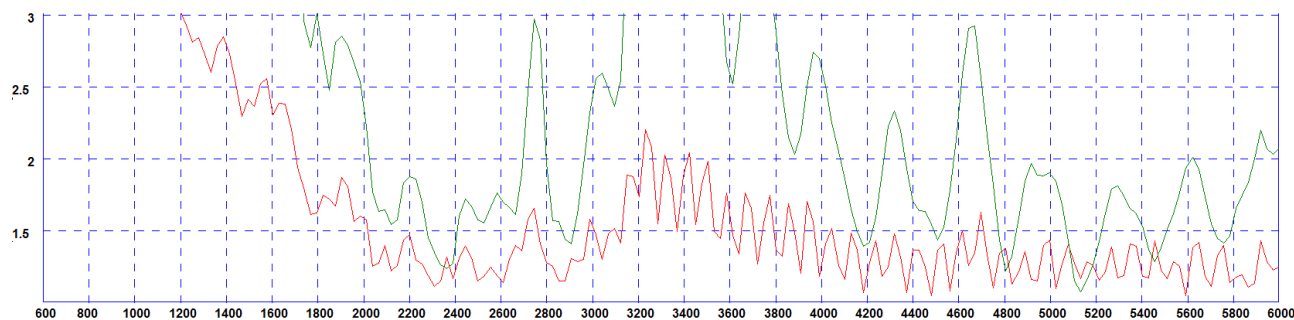
\* Green Trace measured with 0.5m (1.5') of RG174 cable Red Trace measured with 5m(17') of CS32 Cable both on a 600x600mm (2'x2') groundplane

Typical Isolation - 4G/5G Elements\*



\* measured with 0.5m (1.5') of RG174 cable on a 600x600mm (2'x2') groundplane

Typical VSWR - WiFi Elements\*



\* Green Trace measured with 0.5m (1.5') of RG174 cable Red Trace measured with 5m(17') of CS32 Cable both on a 600x600mm (2'x2') groundplane