

# 4x4 MiMo 4G/5G Dome Antenna Kit

## LP-IN2443



### Low Profile 4x4 4G/5G MiMo LTE

The LP-IN2443 range has been designed to provide 4x4 4G/5G MiMo performance from 617-960/1710-6000MHz in a compact low profile housing.

The antenna is designed to be panel mounted and can be fitted on a conductive or non-conductive panel. Supplied with integrated flame retardant RG174 cables (Compliant to UNECE 118.01 and EN45545-2) and a halogen free flame retardant radome the antenna is suitable for many environments and applications. The antenna radome is available in black or white and meets IK10 for vandal resistance and IP69K for ingress protection.

LP-IN2443 is supplied as a complete plug and play kit with integrated 5m (16') ultra-low loss TPE extension cables and SMA (m) connectors for 4G/5G.



Certified IK10  
Impact Resistant



Certified IP69K  
Ingress Protected



Flame Retardant  
Halogen Free  
Radome -UL94-V0

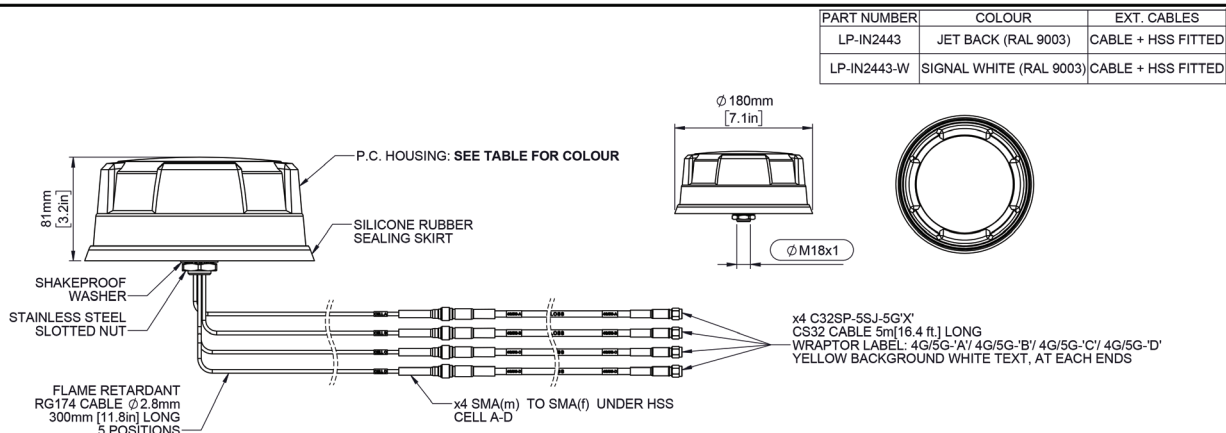
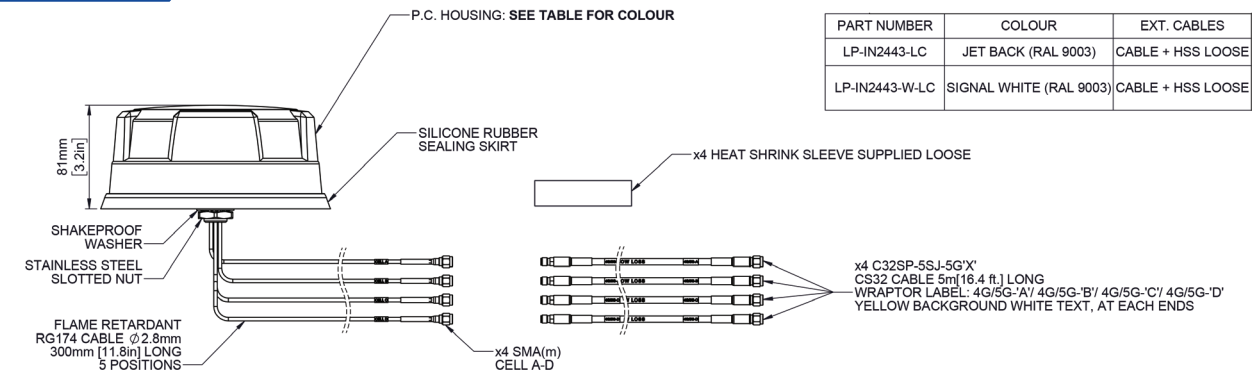


UV, Ozone, High &  
Low Temperature  
Protected



Environmentally  
Compliant - Meets  
RoHS, REACH - PVC  
Free

### Technical Drawing



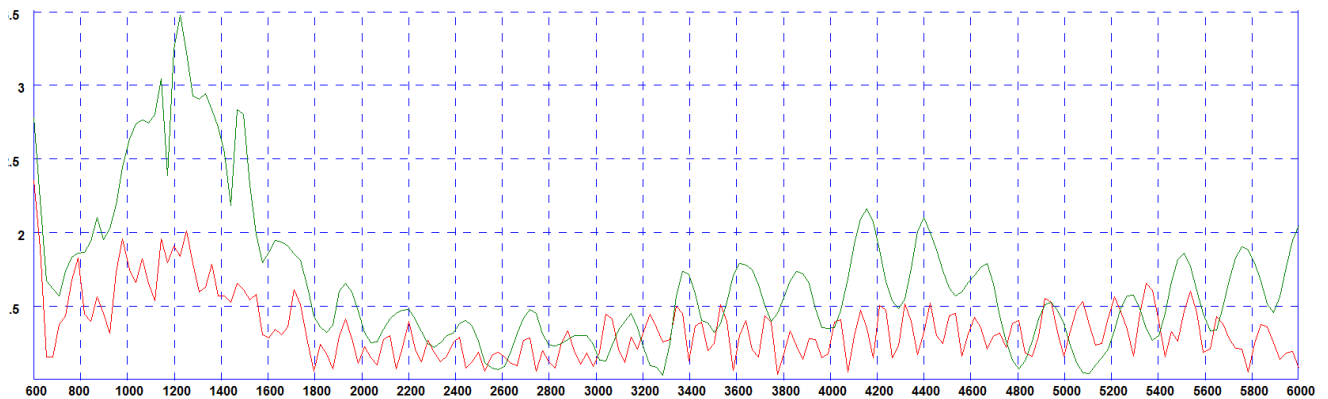
# 4x4 MiMo 4G/5G Dome Antenna Kit

## LP-IN2443

Part No.		LP-IN2443-W	LP-IN2443-W-LC	LP-IN2443	LP-IN2443-LC
<b>Electrical Data</b>					
Frequency Range (MHz)	4G/5G Elements	4x 617-960 / 1710-6000			
		617-960MHz	4		
Peak Gain: Isotropic : (dBi)†	4G/5G Elements	1710-3800MHz	8		
		4900-6000MHz	9		
Typical Efficiency **	4G/5G Elements	617-960MHz	>50%		
		1710-3800MHz	>75%		
		4900-6000MHz	>85%		
Isolation ***	4G/5G Elements	>10dB			
Correlation Co-efficient	4G/5G Elements	< 0.2			
Nominal Impedance		50Ω			
<b>Mechanical Data</b>					
Dimensions (mm)	Height	80 (3.1")			
	Diameter	180 (7.1")			
Operating Temp		-40° / +80°C (-40° / +176°F)			
Colour		White		Black	
Ingress & Impact Protection		IK10 & IP69K			
<b>Mounting Data</b>					
Mounting type		Panel mount			
Max panel thickness (mm)		7 (0.27")			
Mounting hole (mm)		19 (3/4")			
<b>Extension Cable Data</b>					
		CS32 (UN118.03 / EN45545-2 Compliant)			
All Cables	Type	Fitted	Loose	Fitted	Loose
	Diameter (mm)	5 (0.2")			
	Length (m)	5 (16')			
<b>Terminations</b>					
4G/5G		4x SMA (m)			

### Electrical Data

Typical VSWR - 4G/5G Elements\*

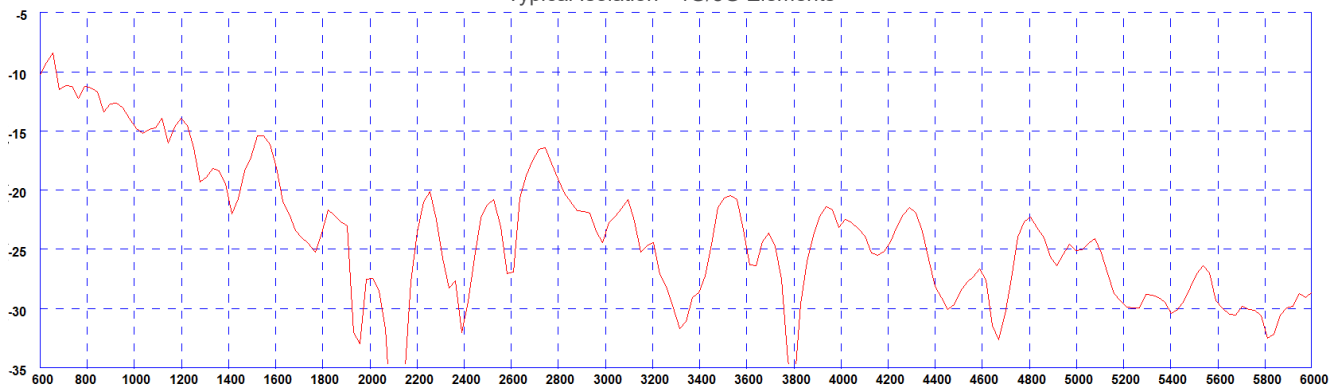


\* Green Trace measured with 0.5m (1.5') of RG174 cable Red Trace measured with 5m(17') of CS32 Cable both on a 600x600mm (2'x2') groundplane

# 4x4 MiMo 4G/5G Dome Antenna Kit

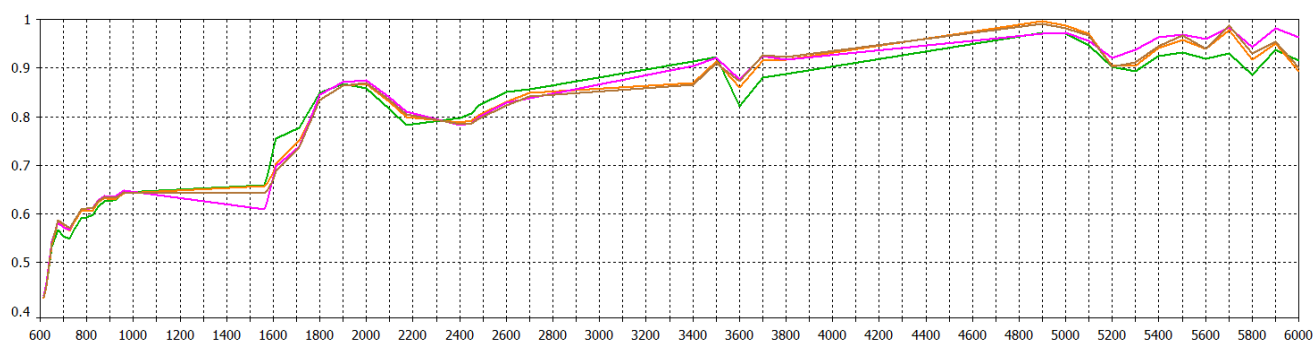
## LP-IN2443

Typical Isolation - 4G/5G Elements\*



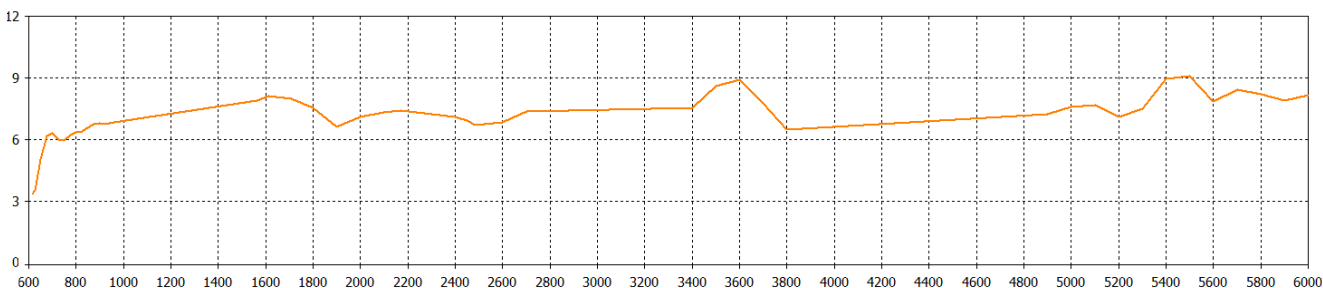
\* measured with 0.5m (1.5') of RG174 cable on a 600x600mm (2'x2') groundplane

Typical Efficiency- 4G/5G Elements\*



\* Efficiency modelled with CST Microwave Studio with antenna mounted on 600x600mm (2'x2') ground plane and ignores cable losses

Typical Peak Gain - 4G/5G Elements\*



\*Swept peak gain modelled with one element fed in CST Microwave Studio on a 600x600mm (2'x2') ground plane excluding cable loss