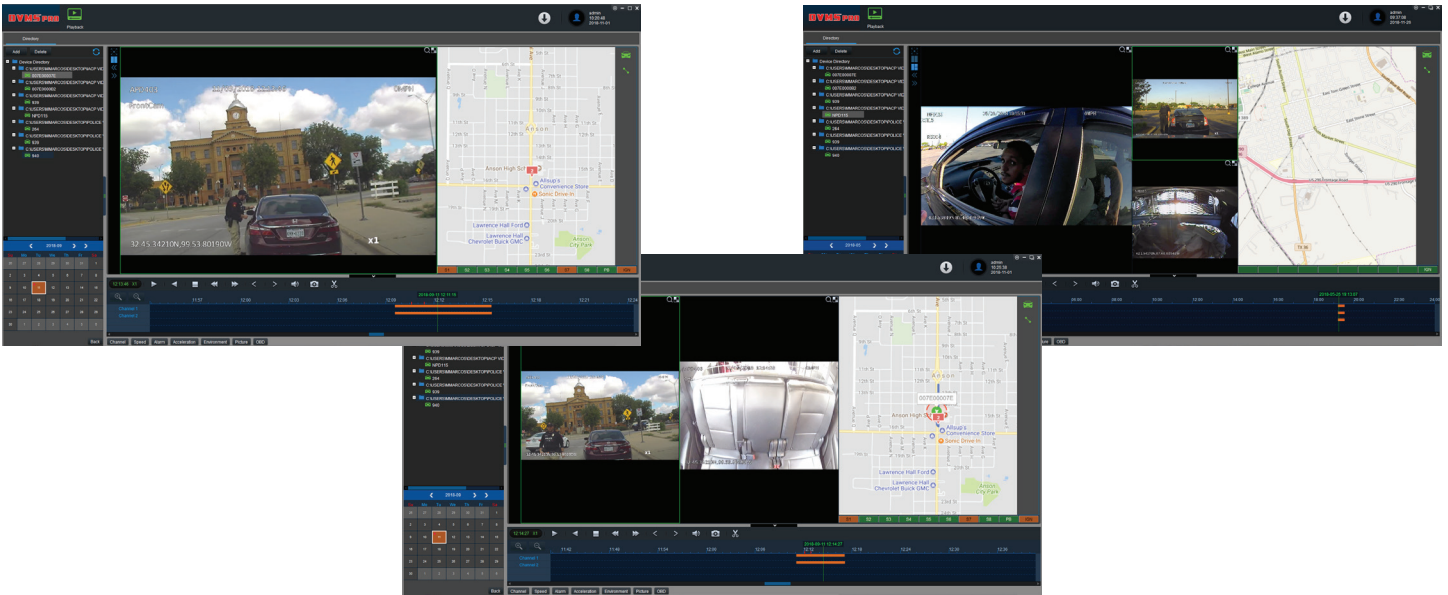


DVMS PRO

VIDEO MANAGEMENT SOFTWARE



Easily locate, manage, and review video from both the in-car system and the integrated body camera with the newly re-designed DVMS PRO software. DVMS PRO unifies the systems' recorded files for synchronized playback, giving you the ultimate digital case management. With a secure login, users can view both in-car and body camera channels at once and zoom in on important details. Use the blur feature for privacy protection and to redact other sensitive data. See speed, GPS route history, and other vehicle metadata such as turn signals, breaks, lights, sirens and much more – all synchronized with recorded video and graphically displayed for easy analysis. With WIFI and cellular networking, DVMS PRO provides features such as wireless video downloading, system email health reports, custom email alerts, live video streaming and fleet tracking. A convenient Evidence folder allows users to label, categorize, organize and generate reports when reviewing critical video files.

FEATURES:

- Secure User Login
- Synchronized Playback
- Complete Audit Trail
- Zoom & Blurring Features
- Passive GPS History
- Geofencing And Fleet Tracking
- Custom Email Alerts
- Convenient Video Offloading
- Live Video Streaming
- Evidence Feature
- Easy Exporting Options
- System Email Health Reports

MINIMUM HARDWARE REQUIREMENTS

Server: Intel Core i5-2400 (6M cache, up to 3.40GHz), 4GB RAM (2 x 2048), 1GB RAM on graphics card, 1000Mbps LAN card, 10GB free storage space for software, 200MB of free disk space, per vehicle, for database

Client: Intel Core i5-2400 (6M cache, up to 3.40GHz), 4GB RAM (2 x 2048), 1GB RAM on graphics card, integrated 10/100/1000 ethernet card

MINIMUM SOFTWARE REQUIREMENTS

Server: Windows Server 2008 R2 (64-bit) or Server 2019 (64-bit), Microsoft .NET Framework 3.5 SP1 or above

Client: Windows 7 or Windows 8 (32- or 64-bit), Internet Explorer 10, Adobe® Flash

6100 W. Sam Houston Pkwy. N.
Houston, TX 77041



800.880.8855
www.safetyvision.com