

# CLEAN ENERGY FOR CLEAN MOBILITY

The iSun Roam is a solar carport EV charging system that brings renewable EV charging with battery functionality to tomorrow's smart cities.

## Product Overview

- Resilient Structure
  - Stainless steel, rust-free, aircraft grade anodized aluminium structure
  - Fits 4 cars
  - 24W, 120V, 1-16 Foot 2700-6500K Smart Lighting
- iSun OS Information Dashboard
  - log solar energy data including cumulative PV system output, the voltage at the PCC, and faults and alarms.
- Solar energy production and sotrage
  - 30kW Ideal 30C3 Inverter
  - 91kWh Kore + Enclosure + Comms + HVAC
  - Prism Solar Bi-facial Mono Front STC 370W, BSTC 441W
- EV Charging
  - (2) EV BOX Elvi Level 2, 7.2kW, 30A, 240V
  - 5 hours of charging per day, per charger
- iSun Sensory Array
  - Humidity, temperature, eCO<sub>2</sub>, PM 2.5, and VOCs
  -

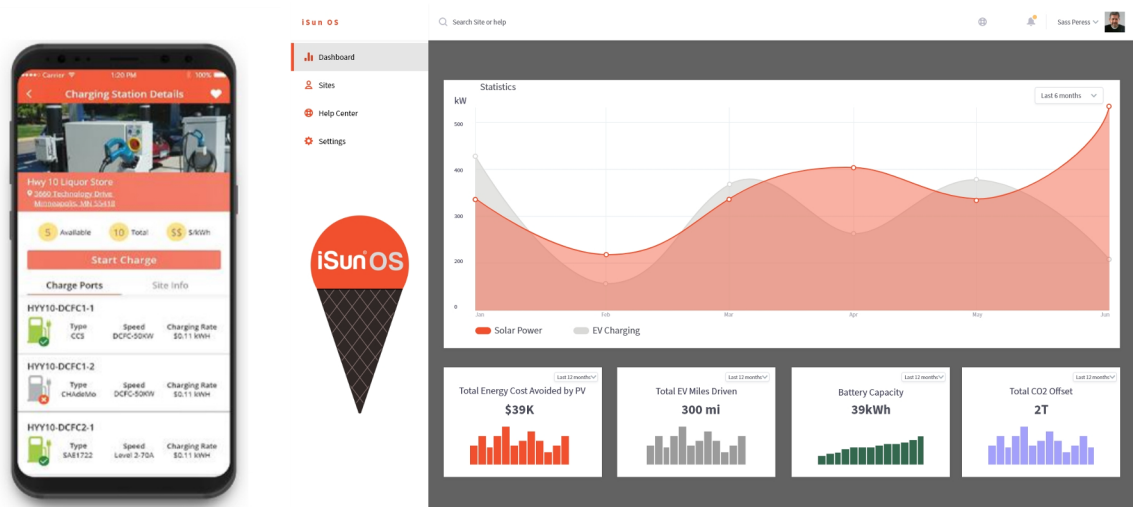


# SOLAR POWERED EV CHARGING

## Off-Grid Battery Solution



## iSun OS: Unparalleled insight into Solar Operations



### Lead by example!

Citizens are done talking about sustainability. In this time of increased sensitivity about the reduction of pollutants that hurt our health and planet, they want action, and are looking for cities to “walk the talk” of sustainability.

### Grow as your needs grow!

The modular, mobile and scalable iSun system is designed to fit 4 cars with 2 EV chargers.

Give us a call, visit our website or send us an email to build your own customized iSun system for your city!

